



Colchester East Hants
Health Centre Foundation
Rooted in community support.

2023-2024 Annual Report

**Number of
ER Visits =
32,686**

**Number of
Births =
501**

**Number of
Lab Tests =
76,812**

**Number of
Ambulatory
Care Visits=
70,517**

CONTENTS

Letter from the Executive Director	01
Funding Allocations	02
Communications, Marketing & Fundraising	03
Summary of Financials	04
Summary Statement of Operations	05
Year at a Glance	06
Fundraising Initiatives	07
Board of Directors 2023-2024	08
Ways to Give	09



From the Executive Director

It's been another incredible year at the Foundation, thanks to the generosity of our community.

Despite the economic challenges that our donors faced, they continued to make supporting the enhancement of healthcare in their community a priority and I'm grateful. This year we saw our most successful direct mail campaigns ever – in support of mammography and specimen radiography. Together the two campaigns netted more than \$276,000 in support of these important equipment campaigns.



Events were the name of the game in the last year, as the community cooled to larger gala-style events but came out in droves for events like Pocketbook Bingo. In the latter part of the year the Foundation was averaging two events per month and moved out of the Truro area and held two successful bingos in Enfield. Through the year we held 12 bingo events which netted more than \$101,000. These events would not be possible without the commitment of dedicated volunteers like Patrick Vandermeulen and Jeff Deuville – our committed bingo callers -- and Tina Belliveau, Traci Northup, Andrea Graham, Liz Morgan, Erin Deuville, Lisa Patton, Sarah Boss, Ted Parker, Don Conrod, Claude Pronovost and Bruce Gallagher.

In October we also hosted our first Oktoberfest-style event at the Legion. With a great band, some great food and fun, the event was a great success. Thanks to our volunteers Patrick and Kate Vandermeulen, Jeff, Erin, Brett and Julia Deuville, Tina Belliveau, Andrea Graham, Trina and Leif Langille, Justin also from Warmth By Design, Liz Morgan, Sarah and Curtis Boss, Grace MacCormick, Dr. Shaun MacCormick, Amber Ball-Ritcey, Dave Ritcey and Deanna White.

The Foundation also partnered with 23 other foundations and became part of the Healthcare Foundations of NS 50/50 hosted by Rafflebox. While it's early days in the raffle, we hope it will continue to generate interest and revenue to support our efforts.

We were also very fortunate to enjoy the support of donors who were able to make significant contributions to enable big changes. Bill and Donna Lake completed a million-dollar pledge just prior to his passing on April 4th. Friends and family gathered together on December 14th to unveil the William (Bill) Lake Dialysis Unit and share a renal-friendly holiday dinner, made possible by his generosity. During the day, family was able to view the new mammography unit made possible by this generous gift and tour and learn about the Dialysis Patient Garden, which enables dialysis patients to not only learn how to grow nutritious food but to also share in the bounty of the garden.

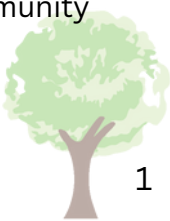
Another gift enabled the creation of a therapeutic treatment room in Mental Health, enabling the CEHHC to begin rTMS (repetitive transcranial magnetic stimulation) therapy for those with mental health conditions that are resistant to treatment.

From individuals making a big impact to organizations like the Masons, this generous support is reaching into all areas of our health centre and making quality care possible. Throughout the year the Foundation pledged its support to ongoing CEHHC staff education, and to departments/units including Cardiac Investigation, Chronic Disease Management (Diabetes), Community Transition, Diagnostic Imaging, Dialysis, Emergency, Intermediate Care, Lab, Medical Day, Mental Health (inpatient and outpatient), Palliative Care, Peri-Operative, Physiotherapy, Social Work, We Care About Cancer and Women and Children's Health.

No matter the size of the gift, every gift made to the Foundation has made an impact. When our community comes together great things are possible.

Respectfully submitted,

Shaun Cline



Funding Allocations

Throughout the course of the 2023-2024 fiscal year the Foundation made funding commitments totaling more than \$1,800,000. The Equipment and Funding Allocations committee was pleased to recommend the following equipment items for funding through our two direct mail appeals:

Spring Appeal – Diagnostic Imaging – thanks to the incredible support of two donors providing funding of approximately \$550,000 toward a new mammography, the Foundation’s Spring Appeal was in support of raising the remaining \$40,000 to ensure funding was in place.

Fall Appeal – Diagnostic Imaging/Surgical Services – the appeal was in support of the approximately \$150,000 committed to fund a dedicated, portable specimen radiography unit.

The committee further recommended the funding of the following equipment:

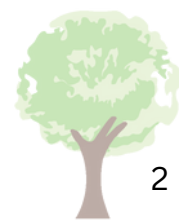
- ECG unit for the IMCU (Intermediate Care Unit)
- Portable Untrasound for IMCU
- Portable Ultrasound for ER
- Furnishings and Equipment for Mental Health and Addictions Recovery and Support Centre
- Blanket Warmer for ER
- Ankle Brachial Index for Medical Day Unit
- Echo Unit for Cardiac Investigation
- Two Stress Testing Treadmills for Cardiac Investigation
- AntiGermix Unit for Cardiac Investigation
- Cellavision for Lab
- Histology Stainer for Lab
- Tissue Processor for Lab
- Upgrade to Ophthalmology Microscope
- Rapid Infuser for ER
- Pressure-Relieving Mattresses for Palliative Care
- Breast Pump and Storage Cart for Women and Children’s Health
- Lift Chair for Community Transition Unit
- Phototherapy Unit for Women and Children’s Health
- Ultrasound-Guided IV for Women and Children’s Health
- Ten Wheelchairs for a variety of units
- Upgrade to Nuclear Medicine CT
- Software Upgrade to CT
- Variety of birthing items for Women and Children’s Health

Additionally the Foundation funded enhancements to a number of areas, including a patient recreation program for the Community Transition Unit, travel and parking passes for mental health clients, supports through the We Care About Cancer Program, Dialysis Assistance Program, Palliative Care assistance and the TLC Fund, administered by the Social Work team. More than \$75,000 was available for CEHHC staff education to ensure team members have up-to-date learning to enhance patient care and smaller renovations to areas like Diabetes Education and Mental Health (rTMS) and other program supports to make delivery of care easier for team members.

The Foundation continues to carry on its tradition of helping to improve the care we receive at our health centre by ensuring our health teams have the best equipment and up-to-date knowledge to make the best care decisions possible.



The new Mammography Unit in our Diagnostic Imaging Department



Last year, the Foundation’s communication goal was to become more visible and known within our community. Aside from social media promotion, we also combined local promotional opportunities like messaging on CTCL and East Hants Community Rider Vans as well as a broader messaging strategy through Television ads and radio spots.

As the fiscal year came to an end, planning was underway for the second phase of our communications strategy, and we are currently working with Hey Rebel for the 2024-2025 promotion of our brand.

In June of 2023, we partnered with 23 other Health Centre Foundations throughout the province for a HealthCare Foundations 50/50 lottery, where each Foundation receives the same equal amount of proceeds, no matter the size of the Foundation or Hospital. Last year, we received \$3498.00.

Another important piece of our fundraising is \$5 Fridays which promotes the message that Small Donations = Big Impact, letting the community know that by donating just \$5, they can help to raise a significant amount of money that will make a tangible difference in our community.

Communications, Marketing and Fundraising



Major Gifts

We continued to be grateful for the support of donors making a major gift through the year and to those who so generously remembered us with a gift in their will.

Major gifts received in 2023 – 2024 totaled \$621,591 and supported equipment purchases and other patient supports in the following areas:
Cardiac Investigation
Diagnostic Imaging
Social Work

These gifts will help ensure that healthcare teams have access to the tools they need most to provide care to their patients and that patients will have access to quality care in a comforting environment.

The Foundation also received bequests in the amount of \$797,713 from the following four donors who will help ensure that their legacy of kindness and the Foundation’s legacy of supporting healthcare here at home will continue well into the future:
Perry Kohler
Edna Parker
Edith Patterson
Mary Stevenson



Summary Financials for the Year Ending March 31, 2024

Summary Statement of Financial Position

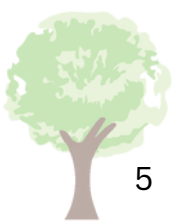
2023		2024	
Assets	<div><div>\$763,507</div><div>Current Assets</div></div>	<div><div>\$1,193,644</div><div>Current Assets</div></div>	
	<div><div>\$11,243,952</div><div>Investments at Market Value</div></div>	<div><div>\$13,010,785</div><div>Investments at Market Value</div></div>	
	<div><div>-</div><div>Capitol Assets</div></div>	<div><div>-</div><div>Capitol Assets</div></div>	
<div><div>\$12,007,459</div></div>		<div><div>\$14,204,429</div></div>	

2023		2024	
Liabilities & Fund Balances	<div><div>\$1,321,533</div><div>Payables & Accruals</div></div>	<div><div>2,278,259</div><div>Payables & Accruals</div></div>	
	<div><div>\$10,685,926</div><div>Fund Balances</div></div>	<div><div>\$11,926,170</div><div>Fund Balances</div></div>	
	<div><div>\$12,007,459</div></div>	<div><div>\$14,204,429</div></div>	



Summary Statement of Operations & Changes in Fund Balances

Revenue	2023	2024
Donations & Memorials	\$591,089	\$335,096
Investment Income	\$487,719	\$441,325
Special Events	\$141,122	\$190,690
Direct Mail	\$235,746	\$288,740
Major and Planned Gifts	\$498,881	\$1,169,304
Expenses		
General Operating & Fundraising	\$581,194	\$560,645
Excess of revenue over expenses before distributions	\$505,765	\$2,866,267
Distribution to Hospital/NS Health	\$912,616	\$1,626,023
Unrealized gain (loss) due to change in market value of investments	(\$354,205)	\$1,006,540
Excess of revenue over expenses before unrealized gain (loss) due to change in market value of investments	-\$52,646	-\$233,704
Excess of revenue over expenses	(\$406,851)	\$1,240,244





Our first Pocketbook Bingo in East Hants was held in January, it was a hit in the community with a sell-out crowd!

Year at a Glance



A glimpse at our first Oktoberfest Event in 2023



The Lake Family, at The William (Bill) Lake Dialysis Unit naming ceremony.



Our "famous" Bingo callers, Patrick & Jeff at our Coldstream Dance Party Bingo!



Dylan and Jordan from Scammell Auto Limited dropped by to present a donation designated to the We Care About Cancer Fund.

Fundraising Initiatives

Pocketbook Bingo

Our Pocketbook Bingo events have been a hot ticket in our community, with a sell-out crowd. We held 12 Pocketbook Bingo events in 2023-2024, with themes like Barbie, Comedy, Coldstream, and more! Some ladies have even created their own shirts for our event! Our 2023-2024 Pocketbook Bingo events netted \$101,276.00

GIRLS' NIGHT OUT
Pocketbook Bingo

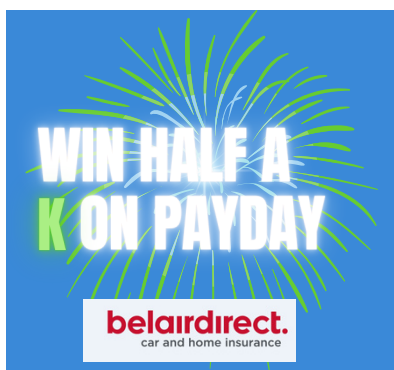


Maritime Oktoberfest Kitchen Party

This event was held in October last year, and it was a blast. With live music from the band Donair Supply, DJ Craig, traditional Oktoberfest grub like sausages, grilled by Warmth by Design, chili, pretzels and donairs from Greco. This event was a great success!

Healthcare Foundations 50/50

This fundraising initiative launched in June of 2023, with 24 Foundations across the province participating. Each Foundation that chooses to participate shares equally in the division of the net funds raised- regardless of the size of the Foundation or hospital. In 2023, the Foundation received \$3,498.00



Half a K on Payday Staff Lottery

Staff have the opportunity to have \$5 bi-weekly off their pay and if they do, they are entered for the chance to win \$500! Last year, lottery participants contributed \$7,203, which is the approximate cost of 1 vital signs monitor.

The Staff Lottery is sponsored by Belairdirect

Upcoming Events in 2024



GIRLS' NIGHT OUT
Pocketbook Bingo

Our fall Pocketbook Bingos are shaping up to be another exciting series! With fun themes, exciting prizes and more! Dates TBA.

Nova Scotia Stampede Kick-Off Barn Dance- September 21st 2024

Colchester East Hants Health Centre Foundation

Board of Directors 2023-2024

Executive



Sarah Boss
Chair



Don Locke
Vice Chair



Marc de Rome
Secretary- Treasurer

Directors



Jennifer Cox



Alan Johnson



Thomas Kayter



Grace McCormick



Liz Morgan



Dr. Kris Srivatsa



Deanna White

Not Pictured:
Jennifer Maxwell
Jacquelyn Jayasinghe
Amber Ball-Ritcey



The future of healthcare is in your hands. YOU can make a huge impact!

Ways to Give:

- One-Time Gifts
- Monthly Giving
- Memorial & Tribute Giving
- Major Gifts
- Gifts by Will
- Gifts of Stock
- Attend our Events
- Through Community Partners

Visit www.cehhcfoundation.ca/waystosupport or call (902) 898-2512 to make a donation.

Follow Us on Social Media!



Colchester East Hants Health Centre
Foundation



@cehhcfoundation



www.cehhcfoundation.ca

